

IOLsone

IOL Delivery System

- **Absolutely reliable and fully automated folding of the trailing haptic**
- **With one only manipulation - pushing the Plunger**

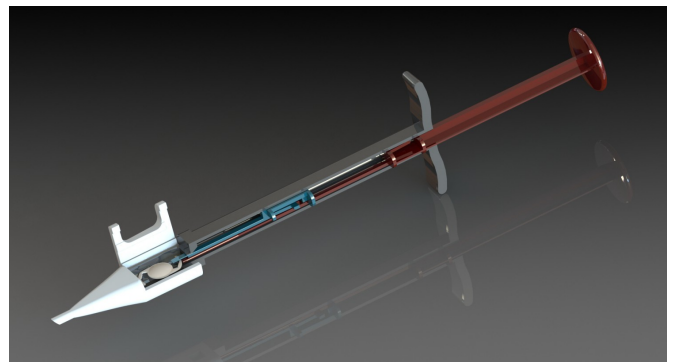
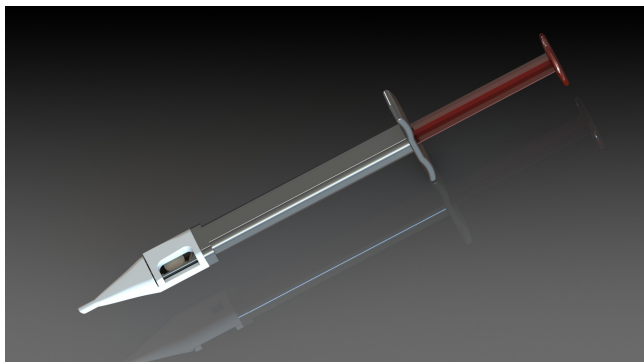
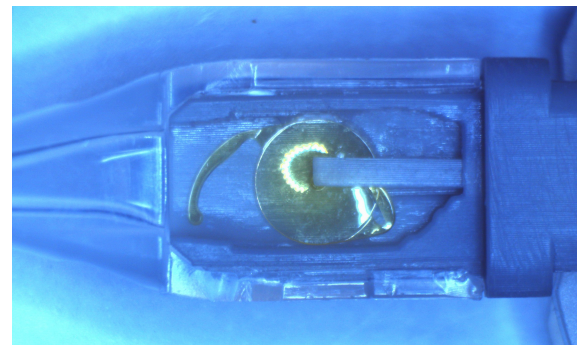
One basic system covers all:

- *Single Piece Lenses / Three Piece Lenses*
- *Hydrophobic Lenses / Hydrophilic Lenses*
- *Pre-Loaded*
- *Loaded in the OR*
- *Automated Loading*



The Solution:

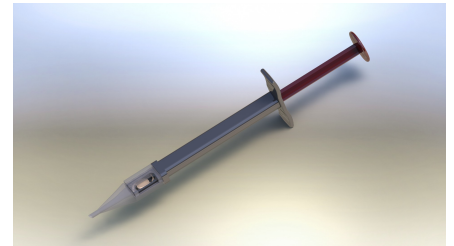
- **Two plungers**
- **One to bring the trailing Haptic fully forced, exactly into the center over the optics**
- **This Plunger stops automatically after half the way through the Cartridge**
- **The other plunger dispenses the lens right into the capsular bag**



Details:

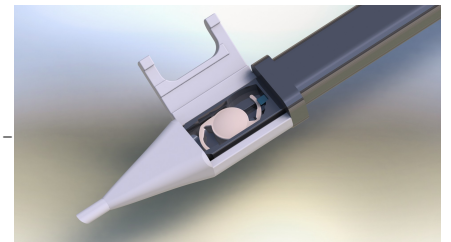
• ***Pre-Loaded***

- Fully relaxed storage of the lens from production till it gets used
- The Instruction for Use:
 - add Visco
 - Push the Plunger



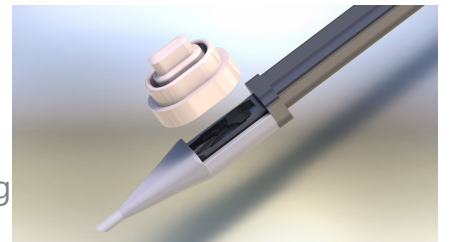
• ***Loaded in the OR***

- The Instruction for Use:
 - add Visco
 - place the lens flat and relaxed into the loading position and close the cover lid
 - Push the Plunger



• ***Automated Loading***

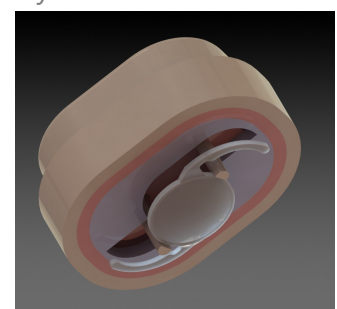
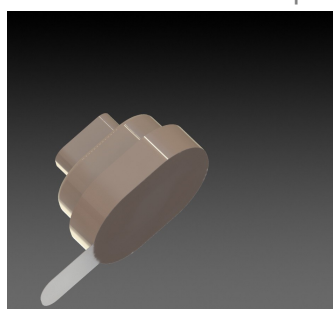
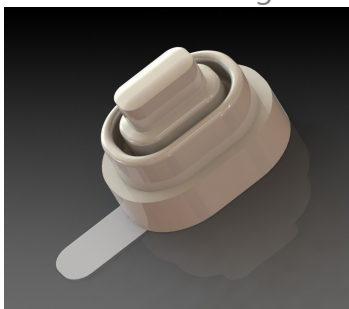
- The Instruction for Use:
 - add Visco
 - peel the cover lid of the Lens packaging
 - place the lens packaging flat on top of the loading position and push the Release Button
 - Push the Plunger



- Explanation:

We make the Lens Packaging serve as an automated loading device:

- Lens sold stand alone in its Packaging for Automated Loading
- during storage the Lens is stored in a fix position, fully relaxed



- after peeling the lid off, by pressing the Release Button, the Lens gets automatically delivered into the IOLsone Inserter.

Our claims are:

- automated folding of the trailing haptic over the optics and this with zero potential for any hassle.
- no one in the OR shall even need to think of handling haptics.
This is the safest way.
- out of the box, single piece inserter, no detaching of cartridge, no loading tools
This is the simplest way.
- one inserter concept, made from 4 molded plastic parts covers all possible applications.
This is the most sufficient development and manufacturing process.
- **one universal Lens Packaging goes into all configurations – and fits for hydrophobic and hydrophilic Lenses.**
This is the most efficient way for your supply chain.

Engineering Principles

Inserter:

- Cartridge: PP or PA, lubricant coated, semi-finished under ISO 14644
- Barrel: PP, molded under ISO 14644
- Plunger: PC or ABS, molded under ISO 14644
- all molded parts come out of simple molding tools, no undercuts, etc. nevertheless: the parts are small and therefore skilled toolmakers and molders are required.
- no screws, bolts or other commodity parts required
- no bonding
- no silicone stopper on the plunger
- assembling: simple click joints
- different cartridges: one only mechanic, which accepts different incision size cartridges.

Lens Packaging (required only for Automated Loading Systems):

- 3 molded: PP parts
semi-finished under ISO 14644
- sealed lid as sterile barrier (and for holding the fluid with hydrophilic lenses)

Contact

We will be happy to give you more detailed information:

Please find this device and a video clip under <http://www.atingertechnik.ch/aktuelles.htm>

Attinger Technik AG
Blaurockstrasse 36
8260 Stein am Rhein
Switzerland

Tel: +41 52 511 22 01
M: +41 79 484 66 55
juerg.atinger@atingertechnik.ch
www.atingertechnik.ch